

# HIGH EFFICIENCY APPLIANCES: **SMART** HIGH EFFICIENCY WATER SOFTENER: **PURE GENIUS**

Introducing Culligan® Twin HE.  
The smartest way to fix hard water problems.



*Culligan*®

better water. pure and simple.®





# BE SMART. CHOOSE THE SOFTENER THAT USES

For high-efficiency water softening, nothing can match the intelligent design of the Culligan Twin HE. With patented technologies to optimize salt, water and electricity consumption by up to 40%\*, it can save you money. Even better, it can improve your daily life. Enjoy fresher laundry and spotless glasses. Do less cleaning and scrubbing. Increase water heater efficiency. And more.

\*40% less versus a time clock regeneration softener

## Is hard water leaving its mark on your life?

It's not difficult to find the evidence. Stubborn spots on glasses and shower doors. Unsightly rust stains on fixtures. Undrinkable tap water. A clogged shower head. Stiff, faded laundry. Odds are, hard water is the cause of these and other problems. Fortunately, there's an easy solution:

The Culligan Twin HE.

## A Continuous Supply of Soft Water

Culligan's Twin HE provides uninterrupted conditioned water, 24-hours-a-day. Two independent mineral tanks provide a continuous flow of soft water; when one tank is exhausted, the second tank takes over while the first regenerates. This system is particularly good in situations where water is extremely hard. The Twin HE is available in various sizes to provide soft water for light commercial applications as well as large families.

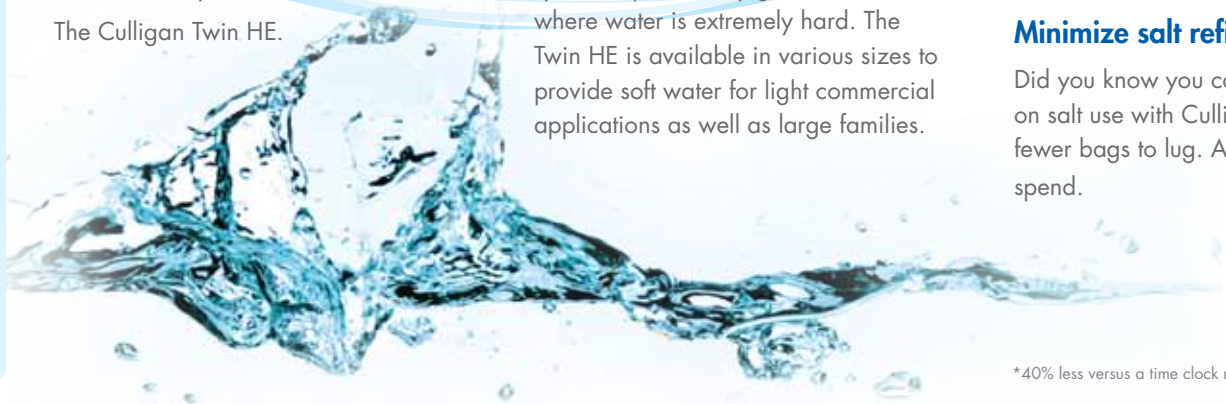
## Introducing the world's smartest water softener.

Just how smart is the Culligan Twin HE? Smart enough to alert you to low salt levels and other issues. Sophisticated enough to be controlled remotely. And intelligent enough to let you customize your water's softness. Here are just a few of the ways it can make your life better:

### Minimize salt refills.

Did you know you could save up to 40%\* on salt use with Culligan HE? That's a lot fewer bags to lug. And a lot less money to spend.

\*40% less versus a time clock regeneration softener



# UP TO 40%\* LESS WATER, SALT AND ENERGY.



## Always know how long your salt will last.

Culligan Twin HE will tell you exactly how many days remain until you run out of salt, and when you need to refill.

## Get “set it and forget it” convenience.

Our Aqua-Sensor® technology automatically adjusts to changes in water conditions—no need to reset the system throughout the year. With an optional modem,



Culligan Twin HE will even alert your Culligan dealer if salt is needed or your softener needs service so the dealer can arrange a service call before you even knew there was an issue!

## Control your softener from anywhere in the house.

Minimize trips to the basement with our remote display. It warns of any problems and gives you push-button control over functions—like activating the electronic bypass valve to water your lawn.

## Adjust the feel of your water.

Our unique Dial-a-Softness® control keeps the water the way you like it.

## Backed by the most trusted name in water.

At Culligan, we've been committed to providing superior water treatment products for over 70 years. Our units are tested to the highest standard, use corrosion-resistant parts, and offer state-of-the-art electronic controls and innovative valve design. Just as important, they're supported by your friendly Culligan dealer, a local water professional.

Feature/Benefits	Culligan High Efficiency Water Softener	All Competitive Water Softeners
Reduces operating costs by 40%*	YES	NO
Remote by-pass valve	YES	NO
Real time status updates	YES	NO
Interactive remote control	YES	NO
Controls the feel of your water	YES	NO
Automatically adjusts to changing water conditions	YES	NO

\*40% less versus a time clock regeneration softener

Call your Culligan dealer at 1-800-CULLIGAN or visit [www.culligan.com](http://www.culligan.com)

**Culligan**

**better water. pure and simple.®**

## PRODUCT SPECIFICATIONS

### Patented smart technology:

- Alternating twin tank design allows for a continuous supply of softened water
- Culligan's proportional brining allows your softener to only regenerate that part of the resin bed that has been exhausted, which reduces salt usage.
- Automatic bypass valve provides the convenience of bypassing the water softener from the softener itself or the remote display.
- Patented Culligan Aqua-Sensor® technology automatically adjusts to changes in water conditions so the softener only regenerates when needed, saving you salt, water and money.
- Our smart brine tank automatically monitors salt levels and tells you how many days of salt are remaining.
- Exclusive Culligan Soft-Minder® meter monitors daily water use and provides advanced system diagnostics.
- The easy-to-read back-lit display with digital clock lets you know your softener is working and warns of system malfunctions.
- Culligan's Dial-a-Softness® Valve allows you to customize the "feel" of your water, so it never feels too soft or too hard.

**Remote display:** optional remote display makes it possible to control and monitor the softener from virtually anywhere in the home<sup>1</sup>.

**Optional modem:** can alert Culligan dealership if salt is needed or softener needs service.

### Exclusive reliable design:

- Exclusive, non-corrosive valve with 6 cycles. The motorized pistons provide more reliability than rotary valve systems.
- High-impact Quadra-Hull® Tank stands up to outdoor use with a four-layer design that resists UV rays, rust and corrosion. Limited lifetime warranty\*.
- Long-lasting brine tank with corrosion-proof components and Dubl-Safe brine refill control assure proper operation.

**Cullex® resin media:** Assures stability and long life. High-grade quartz underbedding evenly distributes water to maximize flow rates.

<sup>1</sup>Requires 120 VAC



See terms and conditions

Products manufactured and marketed by Culligan International Company (Culligan) and its affiliates are protected by patents issued or pending in the United States and other countries. Culligan reserves the right to change the specifications referred to in this literature at any time, without prior notice.

Culligan, "better water. pure and simple.", Aqua-Sensor, Quadra-Hull, Soft-Minder, Dial-a-Softness, Cullex are trademarks of Culligan International Company or its affiliates.

Culligan's HE Series™ Water Softeners have third party validation by WQA (WQA Gold Seal) and UL which assures your Culligan filter has been manufactured under the highest of industry standards.

\*Warranties available separately. See written warranties for applicable terms and conditions.

\*\*All Culligan products are backed with a 100% Satisfaction Guarantee. If you're not completely satisfied with your Culligan Product within 30 days from the date of purchase, we'll refund the purchase price. Dealer participation may vary.

For more information,  
contact your Culligan dealer:  
1-800-CULLIGAN  
[www.culligan.com](http://www.culligan.com)

RR Donnelley # 37296 Printed 8/10  
©2010 Culligan International Company



Printed on recycled paper

**Culligan**

**better water. pure and simple.®**

# Performance Specifications

## Culligan High Efficiency Twin Softener—Downflow Regeneration

Model	9" Model	10" Model	12" Model	14" Model
Control Valve	1" Reinforced Thermoplastic w/ HE Circuit Boards			
Overall Conditioner Ht	56 in	62 in	60 in	73 in
Media Tank Design	Quadra-Hull™			
Media Tank Dimensions (Dia x Ht)	9 x 48 in	10 x 54 in	12 x 52 in	14 x 65 in
Salt Storage Tank Dimensions (Dia x Ht)	18 x 43 in	18 x 43 in	18 x 43 in	24 x 42 in
Exchange Media, Type and Quantity	Cullex® Media, 1.0 ft <sup>3</sup>	Cullex Media, 1.5 ft <sup>3</sup>	Cullex Media, 2.0 ft <sup>3</sup>	Cullex Media, 3.0 ft <sup>3</sup>
Underbedding, Type and Quantity	Cullsan® Underbedding, 12 lb	Cullsan Underbedding, 15 lb	Cullsan Underbedding, 20 lb	Cullsan Underbedding, 25 lb
Exchange Capacity @ Salt Dosage Per Re-charge (per tank)	17,854 gr @ 4.0 lb	26,781 gr @ 6.0 lb	31,352 gr @ 7.0 lb	51,726 gr @ 12 lb
	27,108 gr @ 8.0 lb	40,662 gr @ 12.0 lb	48,458 gr @ 16.0 lb	75,582 gr @ 24 lb
	31,736 gr @ 12.0 lb	47,604 gr @ 18.0 lb	59,267 gr @ 24.0 lb	88,549 gr @ 36 lb
Efficiency rated dosage <sup>1</sup> (per tank)	4,463 gr/lb @ 4 lb salt dosage	4,463 gr/lb @ 6 lb salt dosage	4,479 gr/lb @ 7 lb salt dosage	4,310 gr/lb @ 12 lb salt dosage
Freeboard to Media <sup>2</sup>	14.5 in	14.5 in	16 in	25 in
Freeboard to Underbedding <sup>3</sup>	44.5 in	47.5 in	46 in	59 in
Salt Storage Capacity	375 lb	375 lb	375 lb	600 lb
Rated Service Flow @ Pressure Drop	9.0 gpm @ 11 psi	9.4 gpm @ 12 psi	10.0 gpm @ 10 psi	10.6 gpm @ 11 psi
Auxiliary Flow Rate <sup>4</sup>	10.8 gpm @ 15 psi	11.0 gpm @ 15 psi	12.6 gpm @ 15 psi	12.8 gpm @ 15 psi
Total Hardness, Maximum	75 gpg	99 gpg	99 gpg	99 gpg
Total Iron, Maximum	5 ppm			
Hardness to Iron Ratio, Minimum	8 gpg to 1 ppm			
Operating Pressure	20-125 psi (138–862 kPa)			
Operating Pressure (Canada)	20-90 psi (138–621 kPa)			
Operating Temperature	33-120°F (0–49°C)			
Electrical Requirements	24V/60 Hz			
Electrical Power Consumption, Min/Max	8.4 watts/21.6 watts			
Drain Flow, Maximum <sup>5</sup>	2.5 gpm	2.5 gpm	3.0 gpm	5.3 gpm
Recharge Time, Average <sup>6</sup> Recharge Water	78 minutes	67 minutes	62 minutes	76 minutes
Consumption, Average <sup>6</sup>	47 gallons	45 gallons	67 gallons	155 gallons

<sup>1</sup>The efficiency rated dosage is only valid at the stated salt dosage and is efficiency rated according to NSF/ANSI 44.

<sup>2</sup>Measured from top of media to top surface of tank threads. (backwashed and drained).

<sup>3</sup>Measured from top of underbedding to top surface of tank threads.

<sup>4</sup> Auxiliary flow rates do not represent the maximum service flow rate used for determining the softener's rated capacity and efficiency. Continuous operation at these flow rates greater than the maximum service flow rate might affect capacity and efficiency performances.

<sup>5</sup>Backwash at 120 psi (830 kPa).

<sup>6</sup>10 minute backwash, 4 lb 9" model, 6 lb. 10" model, 7 lb. 12" model or 12 lb. 14" model salt dosage.



## Culligan Limited Warranty

### Culligan High Efficiency Automatic Water Conditioners

You have just purchased one of the finest water conditioners made. As an expression of our confidence in Culligan International Company products, your water conditioner is warranted to the original end-user, when installed in accordance with Culligan specifications, against defects in material and workmanship from the date of original installation, as follows:

<b>For a period of ONE YEAR</b>	The entire conditioner and Culligan HE Municipal Media
<b>For a period of FIVE YEARS</b>	Remote display, modem, Soft-Minder® meter, Smart Brine probe, or Aqua-Sensor® probe, if so equipped.
<b>For a period of TEN YEARS</b>	High Efficiency circuit board, control valve body, excluding internal parts. The salt storage container, brine valve and all its component parts
<b>For the LIFETIME of the original consumer purchaser</b>	The Quadra-Hull™ conditioner tank and the Cullex® resin

If a part described above is found defective within the specified period, you should notify your independently operated Culligan dealer and arrange a time during normal business hours for the dealer to inspect the water conditioner on your premises. Any part found defective within the terms of this warranty will be repaired or replaced by the dealer. You pay only freight from our factory and local dealer charges.

We are not responsible for damage caused by accident, fire, flood, freezing, Act of God, misuse, misapplication, neglect, oxidizing agents (such as chlorine, ozone, chloramines and other related components), alteration, installation or operation contrary to our printed instructions, or by the use of accessories or components which do not meet Culligan specifications, is not covered by this warranty. Refer to the specifications section in the Installation and Operating manual for application parameters.

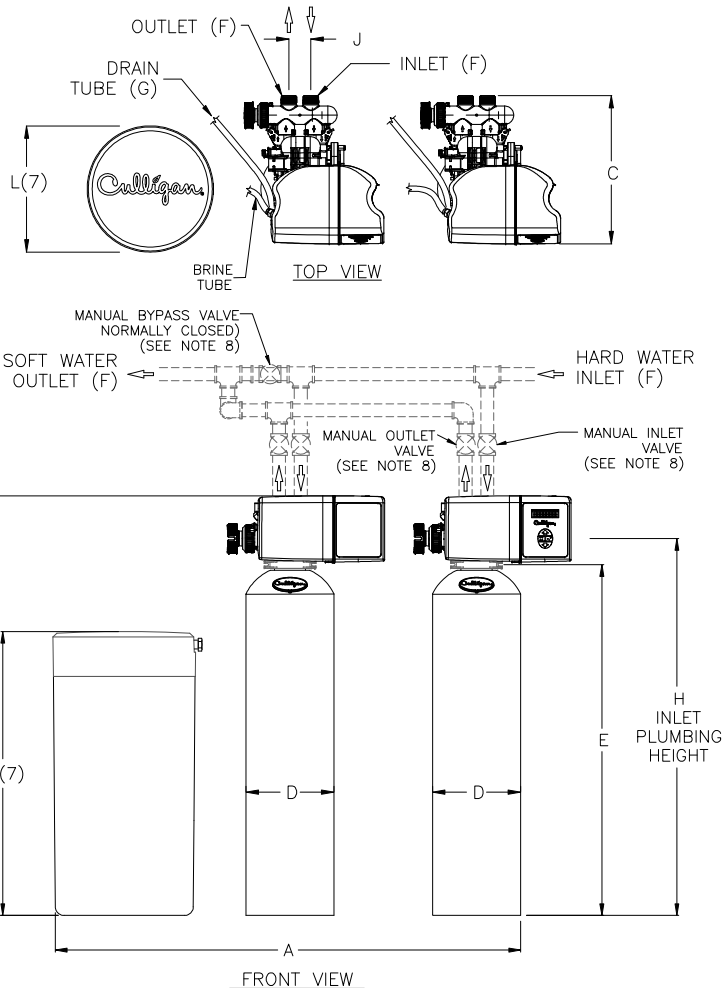
Our product performance specifications are furnished with each water conditioning unit. TO THE EXTENT PERMITTED BY LAW, CULLIGAN DISCLAIMS ALL IMPLIED WARRANTIES, INCLUDING WITHOUT LIMITATION WARRANTIES OF MERCHANTABILITY AND FITNESS FOR PARTICULAR PURPOSE; TO THE EXTENT REQUIRED BY LAW, ANY SUCH IMPLIED WARRANTIES ARE LIMITED IN DURATION TO THE ONE-YEAR PERIOD SPECIFIED ABOVE FOR THE ENTIRE CONDITIONER. As a manufacturer, we do not know the characteristics of your water supply or the purpose for which you are purchasing a water conditioner. The quality of water supplies may vary seasonally or over a period of time, and your water usage rate may vary as well. Water characteristics can also differ considerably if your water conditioner is moved to a new location. For these reasons, we assume no liability for the determination of the proper equipment necessary to meet your requirements, and we do not authorize others to assume such obligations for us. Further, we assume no liability and extend no warranties, express or implied, for the use of this product with a non-potable water source. OUR OBLIGATIONS UNDER THIS WARRANTY ARE LIMITED TO THE REPAIR OR REPLACEMENT OF THE FAILED PARTS OF THE WATER CONDITIONER, AND WE ASSUME NO LIABILITY WHATSOEVER FOR DIRECT, INDIRECT, INCIDENTAL, CONSEQUENTIAL, SPECIAL, GENERAL, OR OTHER DAMAGES.

Some states do not allow the exclusion of implied warranties or limitations on how long an implied warranty lasts, so the above limitation may not apply to you. Similarly, some states do not allow the exclusion of incidental or consequential damages, so the above limitation or exclusion may not apply to you. This warranty gives you specific legal rights, and you may also have other rights which vary from state to state. Consult your telephone directory for your local independently operated Culligan dealer, or write Culligan International Company for warranty and service information.

### Culligan International Company

9399 W. Higgins Road, Suite 1100  
Rosemont, Illinois 60018  
[www.culligan.com](http://www.culligan.com)

MODEL	DIMENSIONS (INCHES)											UNIT DATA (PER TANK)						
	WIDTH A	HEIGHT B(6)	DEPTH C	TANK DIA. D	SIDE- SHELL E	INLET/OUTLET PIPE SIZES F	DRAIN SIZE G	FLOOR TO INLET H	INLET TO OUTLET J	BRINE TANK DIA. L(7)	BRINE TANK HEIGHT M(7)	MAX. CAPACITY GR @ SALT DOSAGE	RESIN VOLUME ft <sup>3</sup>	AUXILIARY FLOW gpm @ 15 psi drop	MAX. DRAIN FLOW gpm	MIN. DRAIN PIPE SIZE IN.	DUPLEX OPER. WT. lbs.	DUPLEX SHIP. WT. lbs.
9	56	55	16	10	48	1.25	0.5	51	2.35	18	42	31,736 @ 12	1	10.8	2.5	0.5	990	256
10	57	61	16	11	54	1.25	0.5	57	2.35	18	42	47,604 @ 18	1.5	11	2.5	0.5	1388	324
12	60	59	16	13.5	52	1.25	0.5	55	2.35	18	42	59,267 @ 24	2	12.6	4.0	0.5	1612	424
14	67	72	16	15.5	65	1.25	0.5	68	2.35	24	42	88,549 @ 36	3	12.8	5.3	0.5	2578	644



NOTES:

- (1) ITEMS SHOWN IN BROKEN LINES TO BE FURNISHED BY OTHERS.
- (2) ALL DIMENSIONS ARE  $\pm 1"$  (25mm) AND SUBJECT TO TO CHANGE WITHOUT NOTICE.
- (3) THE USE OF DISSIMILAR METALS IN A PIPING SYSTEM IS NOT RECOMMENDED. WHERE DISSIMILAR METALS MUST BE CONNECTED IN A WATER SYSTEM, THE USE OF NONCONDUCTIVE (DIELECTRIC) FITTINGS MAY REDUCE GALVANIC CORROSION.
- (4) A TEN FOOT POWER CORD (LONGER LENGTHS AVAILABLE) AND WALL MOUNT TRANSFORMER ARE PROVIDED. THE CUSTOMER SHOULD PROVIDE A RECEPTACLE, PREFERABLE ONE NOT CONTROLLED BY A SWITCH THAT CAN BE TURNED OFF ACCIDENTALLY, OBSERVE THE LOCAL ELECTRICAL CODES.
- (5) ALLOW 6-12 INCHES BEHIND THE UNIT FOR PLUMBING AND DRAIN LINES AND 4 FEET ABOVE FOR SERVICE ACCESS AND FILLING THE SALT CONTAINER.
- (6) TO PERMIT THE OBSERVATION OF THE DRAIN FLOW DO NOT MAKE A DIRECT CONNECTION TO THE DRAIN. PROVIDE AN AIR GAP OF AT LEAST TWO TIMES THE DIAMETER OF THE DRAIN PIPE OR CONFORM TO LOCAL SANITATION CODES.
- (7) BRINE TANK DIMENSIONS SHOWN ARE FOR THE BRINE TANK MOST COMMONLY SELECTED FOR USE WITH THIS SIZE SYSTEM.
- (8) BYPASS VALVE IS INCLUDED WITH SOFTENER, PLUMBING OF 3-VALVE BYPASS IS OPTIONAL.

DO NOT SCALE DRAWING TOLERANCES: $\pm 1/8"$ UNLESS OTHERWISE NOTED				
Let.	Change	By	App	Date

**Culligan®**  
**ENGINEERED SYSTEMS**  
 ROSEMONT, ILLINOIS

PRINT AND BILL OF MATERIAL ARE NOT TO BE USED WITHOUT THE WRITTEN CONSENT OF CULLIGAN INTERNATIONAL CO.

NAME HIGH EFFICIENCY TWIN SOFTENER TECHNICAL DATA SHEET		
DETAILED BY: KMR 6/08/10	APP. BY:	SHEET 1 OF 1
REF. NO.	PART NO. HE_TWIN	